

INSTALLATION GUIDE



ISNORKELO34

TO SUIT FORD PX RANGER XL 9/2011- 7/2015 2.2 & 3.2L DIESEL
FORD PX RANGER Mk II XL 7/2015+ 2.2 & 3.2L DIESEL
FORD RANGER Mk III 7/2018+ 2.0L, 2.2 & 3.2L DIESEL



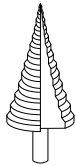
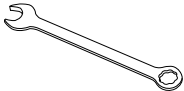
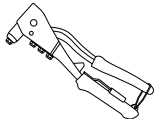
- Ironman 4x4 snorkel fits to the right-hand side of PX Ranger, PX Mk II and PX Mk III
- It will take about 3 hours to install
- Below is a list of some required tools for installing your Ironman 4x4 Snorkel:
 - **Pop Rivet Gun**
 - **Spanner (13mm)**
 - **Step Drill**

ISNORKELO34/140721

NOTE: Only use “sensor safe” sealant during installation

IMPORTANT: Snorkel installations should only be done by a qualified person and it's the responsibility of this person to ensure correct fitment, confirming the installation is water tight

Tools Required

<p>Step Drill</p> 	<p>13mm Spanner</p> 	<p>Pop Rivet Gun</p> 
---	---	---



- 1.** Before installation check snorkel application is compatible with your vehicle. These instructions are for PX, PX Mk II and PX Mk III only. Refer to headings throughout these instructions for directions specific to your vehicle.

PX Mk II/PX Mk III

- 2A.** Remove right hand front mud guard liner, mud flap, air box, air entry duct to air box, mudguard stuffer, front mudguard grill and side marker indicator.



- 3A.** Apply masking tape around opening on mudguard and to screen pillar.



- 4A.** Locate paper drilling template and cut out shaded areas. Place template in position on right hand mudguard, aligning with opening and guard edge, then mark two mounting holes.



- 5A.** Drill 2 x 16mm mounting holes using a step drill. De-burr and rust-proof exposed metal.



PX

- 2B.** Remove right hand front mud guard liner, mud flap, air box, air entry duct to air box, mudguard stuffer, front mudguard grill and side marker indicator.



- 3B.** Apply masking tape to right hand windscreen pillar.

- 4B.** Attach snorkel securing bracket from inside of mudguard using pop rivets supplied as shown.



PX/PX Mk II/PX Mk III

5A&B.

Stick snorkel gasket to back of snorkel body as shown, using lock tight screw studs into captive nuts on back of snorkel body.

NOTE:

Long 40mm stud goes in hole as shown.



6A&B.

Attach upper mounting bracket loosely to snorkel.



7A&B.

Hold snorkel body in position on mud guard. Mark location of top mounting bracket onto screen pillar.

NOTE:

Make sure that snorkel mounting bracket clears the driver's side door.



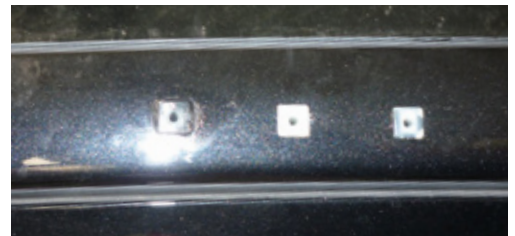
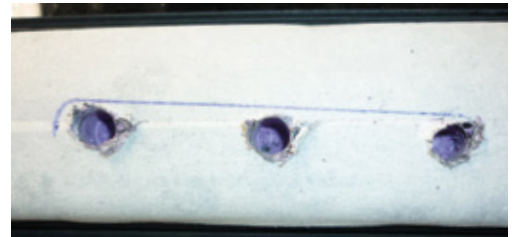
8A&B.

Remove mounting bracket from snorkel. Hold bracket in position previously marked on pillar and mark three mounting holes.

Drill mounting holes in pillar to 7.5mm. Apply silicone sealant. Insert mounting plugs and attach mounting bracket using three self tapping screws provided.

NOTE:

When drilling holes, drill far enough into pillar insulation to allow plugs to be inserted.



PX/PX Mk II/PX Mk III

9A. Install snorkel body to mudguard. Place snorkel mounting plate over studs and secure in position with nyloc nuts and body washers provided. Attach to pillar bracket using M6 bolts and washers provided.



PX

9B. Install snorkel body to vehicle using three nyloc nuts and body washers provided and attach to pillar bracket using M6 bolts and washers provided.



PX/PX Mk II/PX Mk III

10A&B.

Drill hole in mounting flange for rear air duct to 8.5mm. Hole is marked by a dimple. Apply a liberal amount of silicone to snorkel body and rear air duct. Engage mounting flange for rear air duct to long stud on snorkel and secure using M8 Nyloc nut and washer provided.



NOTE:

Make sure that connection is properly sealed.



11A&B.

Attach duct bracket to captive nut in duct. Mark hole location on inner guard and drill to 8.5mm, then attach using M8 bolt, nut and washers provided.



12A&B.

Apply a liberal amount of silicone to both internal and external mating surfaces of front and rear ducts and push together as shown. Make sure that connection is sealed.



13A&B.

Attach front duct mounting bracket as shown and secure using hardware provided.

NOTE:

Factory bracket may need to be bent up to allow clearance for front air duct as shown in yellow circle.



PX/PX Mk II/PX Mk III 2.2L and 3.2L

14A&B.

Remove factory adaptor from air cleaner as shown.



15A&B.

Fit supplied air box adaptor to air box. Seal both inner and outer mating surfaces with a liberal amount of silicone. Secure in place using self tapping screws provided.



16A&B.

Apply a liberal amount of silicone to air box adaptor and air entry duct and refit air box to vehicle.

NOTE:

Ensure connection is properly sealed.



PX Mk III 2.0L

17A&B.

Remove the factory airbox inlet duct from the air box.



18A&B.

Remove the airbox from engine bay.



19A&B.

Apply masking tape to the outside end of the airbox as shown.



20A&B.

Hold the airbox adapter in position as shown and mark the 4 x mounting holes onto the masking tape.



21A&B.

Drill the 4 x mounting holes to 5mm.



22A&B.

Temporarily locate the airbox adapter in position with the supplied pop rivets through the mounting holes and using the 76mm hole saw as a guide mark the centre of the air entry hole.



23A&B.

Drill a 6mm pilot hole.



24A&B.

Enlarge the hole to 76mm using the hole saw.



25A&B.

Apply sensor safe silicone sealant to the mounting face of the airbox adapter and secure it into position using the supplied pop rivets.



26A&B.

Apply a liberal amount of sensor safe silicone sealant around the opening for the original air entry duct in the airbox.



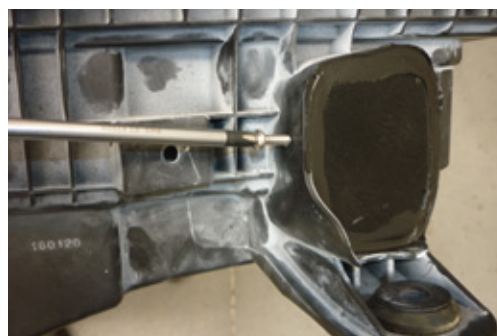
27A&B.

Insert air entry blanking plug.



28A&B.

Apply another bead of sensor safe silicone sealant around the outside edge of the blanking plug and secure into place using the self-tapping screw supplied.



29A&B.

Secure the rubber joiner to the air entry duct in the engine bay using the hose clamp supplied.



30A&B.

Position the remaining hose clamp over the rubber joiner, reinstall the air box and secure the rubber joiner to the air box adapter with the hose clamp.



31A&B.

Pull wiring for side marker indicator through snorkel body and attach indicator to snorkel.

32A&B.

Check all hose connections and air box for potential leaks and seal as required.

33A&B.

Re-fit guard liner and mud flap.

34A&B.

Fit Ironman 4x4 Air Ram and secure with hose/ clamp provided.

