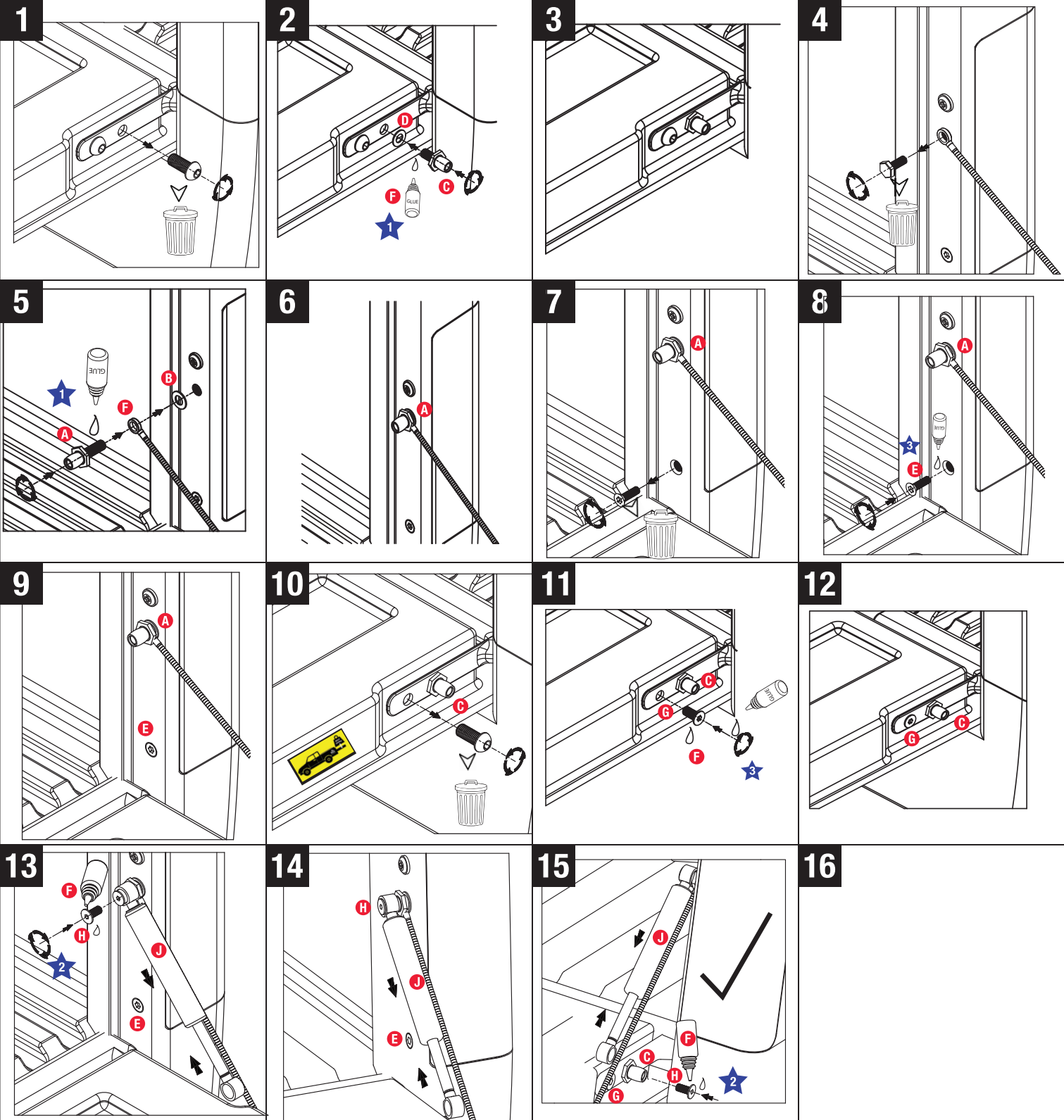


**EZDown Reloaded Instruction  
- 1st Fitment**

**EZDown Reloaded VW Amarok - RL0850**

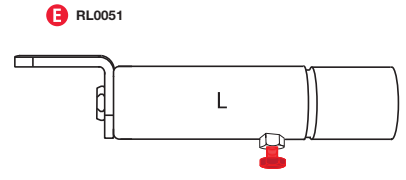
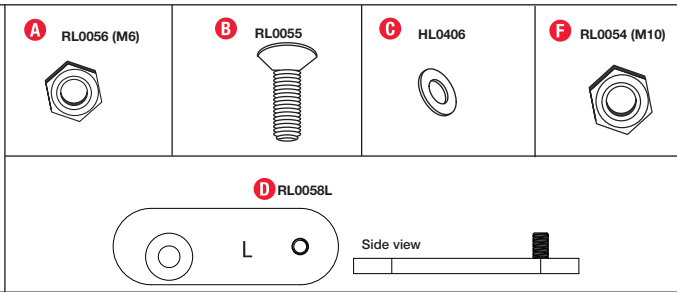


FITTING CODE	MANUFACTURER	MODEL TYPE	YEAR	STOCKIST	PRODUCT	REVISION	LABOUR	DATE	PAGE
RL0850	VOLKSWAGEN	AMAROK	2013 onwards	GENERAL USE	EZDown RELOADED	1	20min	22/10/2018	1
TORQUE - N.m	★ 27N.m±2N.m	★ 15N.m±2N.m	★ 17N.m±2N.m	www.ezdown.co.za					

**NB: After installation please close tailgate gently to ensure that there is no interference with any hardware.**

**IMPORTANT:**  
No liability will be incurred by Industrial Specialised Applications company, for injury, death, or property damage caused by a product which has been set up, operated, and/or installed contrary to EZDown installation guide/manual, or which has been subjected to misuse, negligence, or accident, or which has been repaired or altered by anyone other than Industrial Specialised Applications, or which has been used in a manner or for a purpose for which the product was not designed.





EZDown Reloaded Instruction  
- 2nd Fitment

**EZDown Reloaded VW Amarok - RL0850**

**1**  
**Right Hand Side (RHS) and Left Hand Side (LHS) are determined when sitting in the Drivers side of the Vehicle.**

**CAUTION:**  
Do not remove the red bolt from cylinder E until fully installed - if you do you will loose the pre-tension.

**2**  
Open tailgate.  
See slide 3 for area where nut F needs to be fitted.

Loosen Half a Turn before installing fitting Locking Nut shown in Slide 4

**3**  
Tailgate

Remove the bolt on the bracket and throw away.

**NB: Two persons are required to carry out the installation and tightening of the locking nut F.**

While one person holds this bolt in place using a socket extension with the tailgate open.

The 2nd person to gain access underneath the LHS tail light and tighten the M10 locking nut F over the thread of this existing bolt making sure that this is tightened as securely as possible (Please observe Torque \*3 for Nut)

**4**  
Tailgate

**NB:**  
View from inside vehicle looking out. Insert bracket and fasten M8 counter-sunk capscrew

Note this is only fitted to LHS.

**5**

Fit Cylinder in position shown by sliding over the end Hexagonal bolt in the multispline on the cylinder and will locate in this position see slide 6

**6**

Cylinder slides over Hexagonal Bolt and then over bracket D onto slot and locates over protruding thread on the bracket D

Ensure cylinder locks flush onto the Hexagonal bolt head as per slide 5

**7**  
**TROUBLESHOOTING**  
Should your brackets not align please rotate the nut between 1 - 15 Degrees to ensure your bracket faces are parallel

**8**  
Ensure both Brackets as indicated with \* are in alignment.

This is what it will look like on the inside when correctly installed.

**9**

Fix washer and M6 Nut onto stud and fasten when tailgate is still open.

**10**  
**REMOVE RED BOLT.**

**11**  
**NOTE:**  
Tailgate will fall very slowly the first cycle in order for the Reloaded to set.

**12**  
**SHOULD YOU WANT TO INCREASE YOUR PRELOAD OR REINSTALL YOUR PRELOAD IF REMOVED FROM THE VEHICLE PLEASE RETURN POD CYLINDER (ITEM E) TO YOUR CLOSEST STOCKIST FOR ASSISTANCE**

**13**  
**FITMENT HAND TOOLS**  
Extension and ratchet  
1 x 16 mm Socket  
1 x 10 mm Ring Spanner  
1 x 17 mm Spanner  
1 x M10 Multispline  
1 x 5 mm Allen Key  
1 x 4 mm Allen Key  
1 x 8mm Socket  
1 x Star Screwdriver

**14**

FITTING CODE	MANUFACTURER	MODEL TYPE	YEAR	STOCKIST	PRODUCT	REVISION	LABOUR	DATE	PAGE
RL0850	VOLKSWAGEN	AMAROK	2016 onwards	GENERAL USE	EZDown RELOADED	5	25min	15/05/2019	1
TORQUE - N.m	★ 27N.m±2N.m	★ 15N.m±2N.m	★ 45N.m ±5N.m	www.ezdown.co.za					

**NB: After installation please close tailgate gently to ensure that there is no interference with any hardware.**