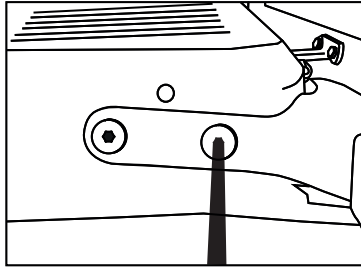


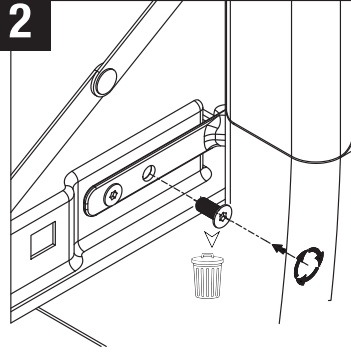
## EZDown Instruction

## TOYOTA HILUX ED0000 – 2006 TO 2015

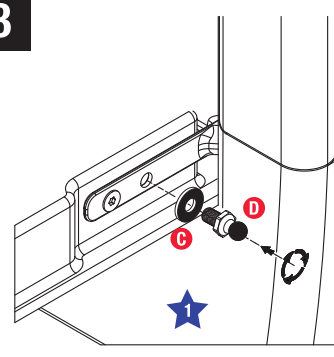
### 1 Remove hinge stud



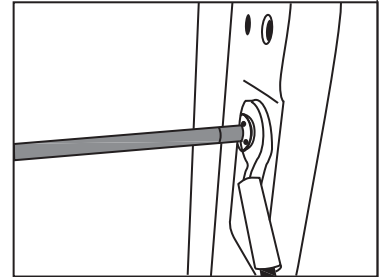
### 2



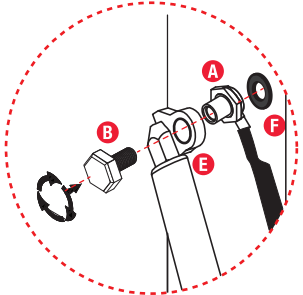
### 3



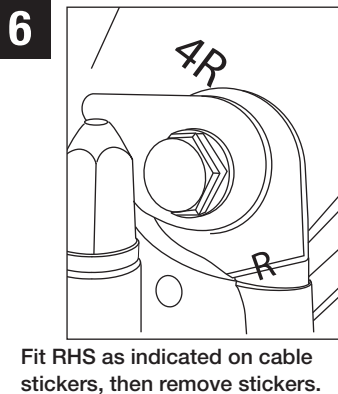
### 4 Remove tailgate cable stud



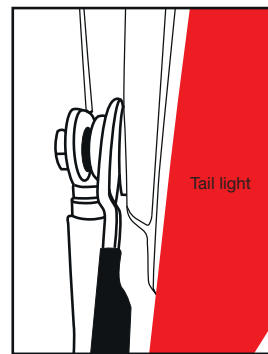
### 5 Place cable on stud with washer in order to align correctly



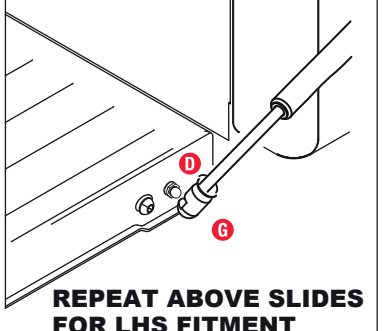
### 6



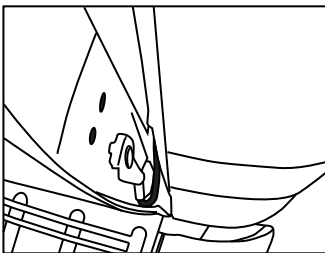
### 7



### 8 Clip socket onto lower ball stud



### 9 Open and close the tailgate slowly to check alignment and that the cable does not interfere



### 10

Fit the warning sticker to the tailgate to ensure the tailgate does not get overloaded



### 11

Please ensure that your OEM parts are safely stored

**NB: Locktite all fixing mounting points where applicable.**

### 12

**NB:**  
When installed, please close tailgate gently to ensure that the cable is rotating properly and that there is no interference with any of the other hardware

### 13

### 14

### 15

### 16

FITTING CODE	MANUFACTURER	MODEL TYPE	YEAR	STOCKIST	PRODUCT	REVISION	LABOUR	DATE	PAGE
ED0000	TOYOTA	HILUX	2006 - 2015	GENERAL USE	EZDOWN	2	25min	14/07/2021	1
TORQUE – N.m	★ 27N.m±2N.m		★ 15N.m±2N.m		www.ezdownshop.co.za				

**NB: After installation please close tailgate gently to ensure that there is no interference with any hardware.**

#### IMPORTANT:

No liability will be incurred by Industrial Specialised Applications company, for injury, death, or property damage caused by a product which has been set up, operated, and/or installed contrary to EZDown installation guide/manual, or which has been subjected to misuse, negligence, or accident, or which has been repaired or altered by anyone other than Industrial Specialised Applications, or which has been used in a manner or for a purpose for which the product was not designed.

