

FITMENT INSTRUCTIONS

Alu-Cab™



Rear Door Mozzie / Midgie Net to Canopy Camper (CC-A-MN-SR)

All rights reserved. No part of this document may be reproduced, translated, stored in a retrieval system, or transmitted, in any form or by any means, electronic, mechanical, photocopying, recording or otherwise, without prior written permission of the owner.

Review all instructions information carefully before installation.

Any damages, direct or incidental to the installer and/or property due to incorrect installation of any parts are the responsibility of the installer. Due to the various applications and fitment options available, the responsibility lies with the user to ensure all mounting points are secure and tight before every trip. If unsure, consult with your Distributor regarding the operations of our products.

Users are advised to be mindful of the load they are carrying and drive in accordance with road conditions.

DISCLAIMER

Alu-Cab

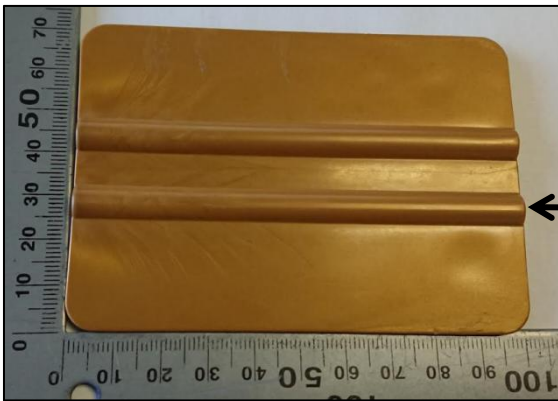
1. Mozzie / Midgie Net Fitment – Tools, Fasteners & Materials

The tables below show the equipment required to start the fitment to either a Double Cab, or Xtra Cab, Canopy Camper.

1.1. Tools & Items Required:

TOOLS
* Applicator / Plastic Paddle
Measuring Tape
Pencil

CONSUMABLES
Alcohol-based cleaning agent (50/50 Isopropyl Alcohol and water mixture is best)
3M Tape Primer 94 (Advised for optimal results)
Cloth



* 3M PA-1 Hand Applicator:

This tool ensures that even pressure is applied when seating the self-adhesive Velcro, and aids in effective curing of the adhesive glue.

Alternative tools, or methods can be used, but it is highly advised to use this tool, or similar, to achieve the best results.

1.2. Hardware Required: (Included with Kit)

ITEM	DESCRIPTION	QTY
CC-A-MN-SR	Rear Door Mozzie / Midgie Net	1
25mm Self-Adhesive Velcro (1080mm)	25mm Self-Adhesive Velcro (1080mm)	2
25mm Self-Adhesive Velcro (980mm)	25mm Self-Adhesive Velcro (980mm)	1
25mm Self-Adhesive Velcro (100mm)	25mm Self-Adhesive Velcro (100mm)	5



WARNING

Always wear appropriate PPE (Personal protection equipment) when fitting this product. Although the mounting kit is designed to be DIY, if you have any doubts or concerns, contact an accredited fitment centre to carry out the work. Alu-Cab will not be liable for any injury to persons, and/or damage to products and/or vehicles.

2. Surface Preparation

2.1 Cleaning: The surfaces that need to be cleaned with the 50/50 mixture of Isopropyl Alcohol and water are indicated in Figure 1, below. Use a clean cloth/rag to gently wipe the indicated surfaces (blue) with the cleaning mixture. Allow enough time for evaporation. (The surfaces should be bone dry before progressing to the next step.)

2.2 Priming: This step is highly recommended for optimal results. Use a new, clean cloth/rag to lightly wipe the same indicated surfaces with 3M Tape Primer 94. Allow the primer to 'flash off'. (The surfaces should be bone dry before progressing to the next step.)

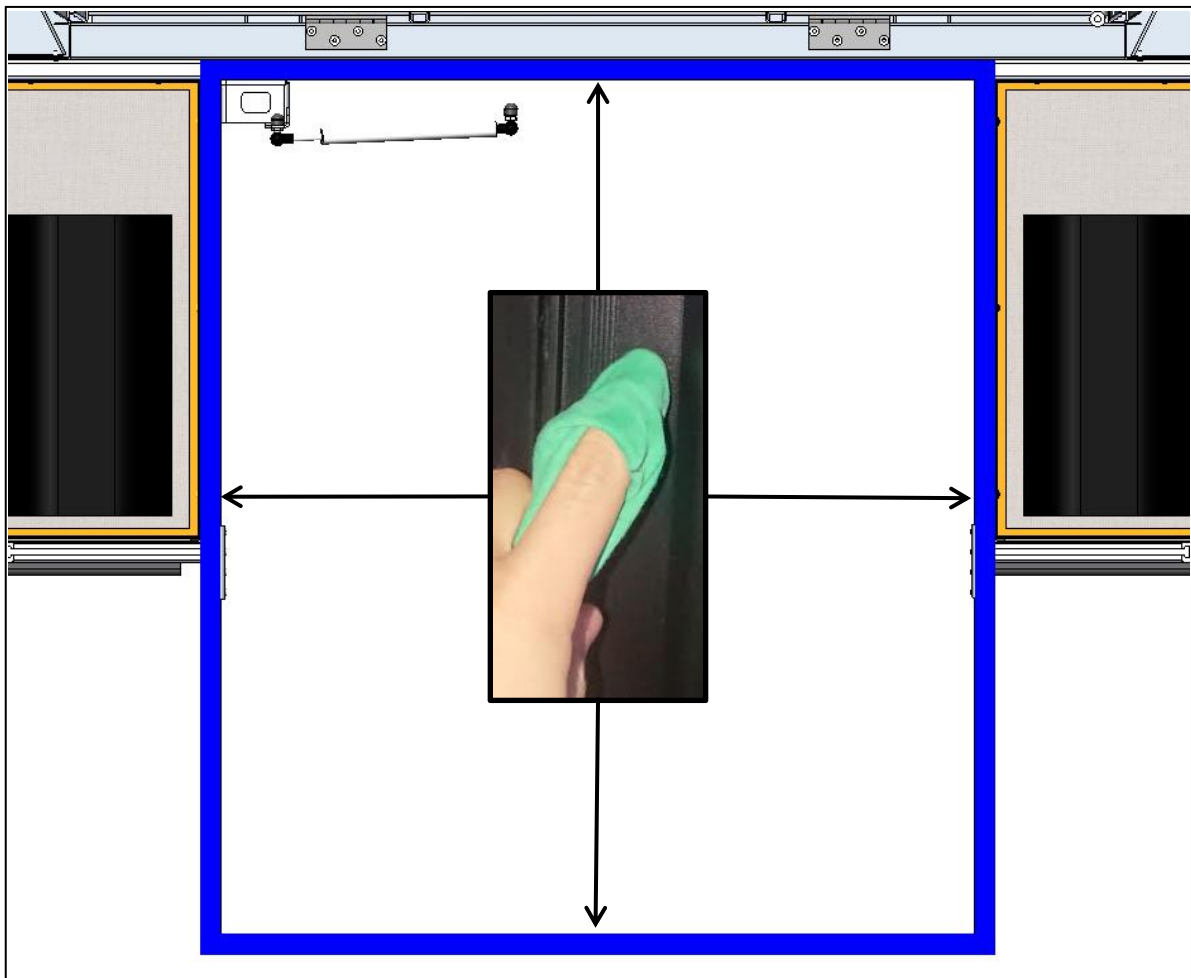


Figure 1: Cleaning / Priming Surface Indication, around Rear Door.

3. Velcro Application

3.1 Top Surface - Velcro Application (980 mm Strip):

Centre the 980 mm long strip of Velcro, with the rear door opening, to double check that the correct length will be applied. The ends of the Velcro strip must align with the vertical edges of the rear door frame. Shown in Figure 2, below:

Peel back the white backing layer, and apply the Velcro, starting at the one end, flush on both edges of the frame, and work your way along the length slowly. After the Velcro is seated, use the 3M PA-1 Applicator to apply a smooth, constant pressure sweep from one end to the other. This even pressure activates the bonding adhesive, and pushes out air bubbles. See Figure 2, below:

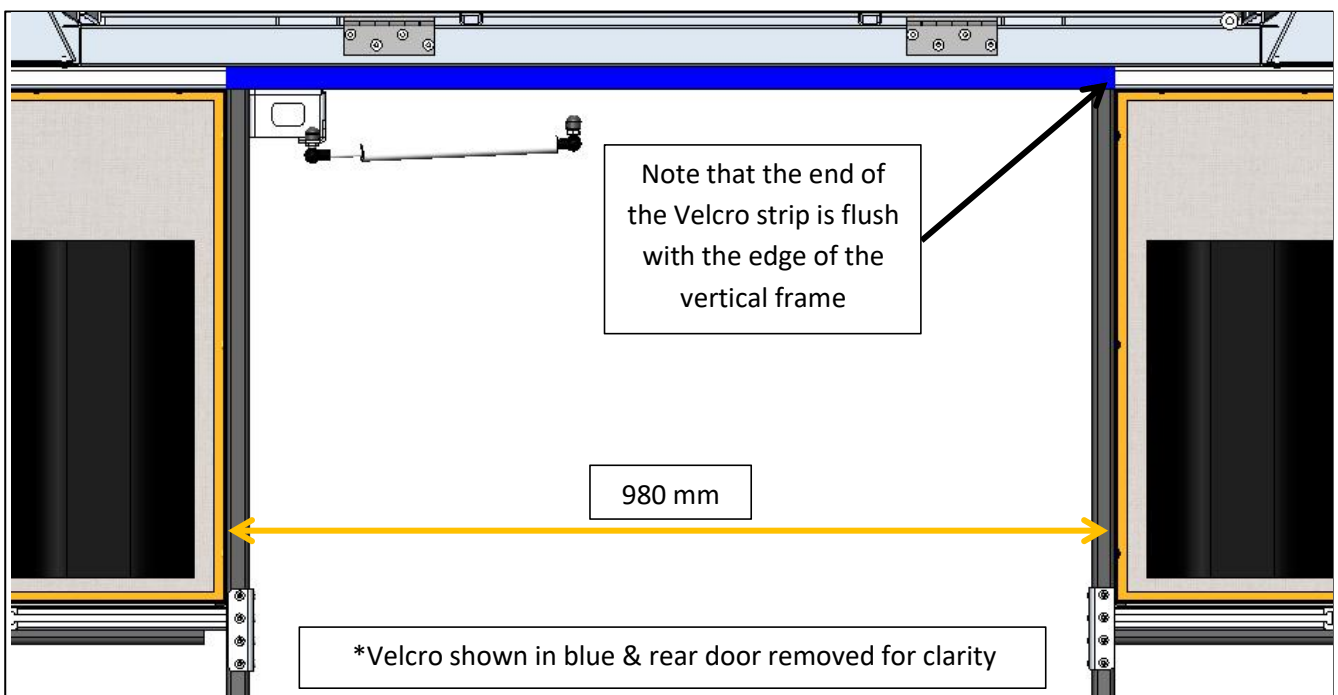


Figure 2: Velcro Application (Top Surface)

3.2 Side Surfaces - Velcro Application (1080 mm Strips):

Apply the two (2) 1080 mm long Velcro strips to the LH & RH vertical surfaces of the rear door frame, as shown in Figure 3, below:

Peel back the white backing layer, and apply the Velcro, starting in the one corner, flush on both edges of the frame and work your way along the length slowly. After the Velcro is seated, use the 3M PA-1 Applicator to apply a smooth, constant pressure sweep from one end to the other. This even pressure activates the bonding adhesive, and pushes out air bubbles. See Figure 3, below:

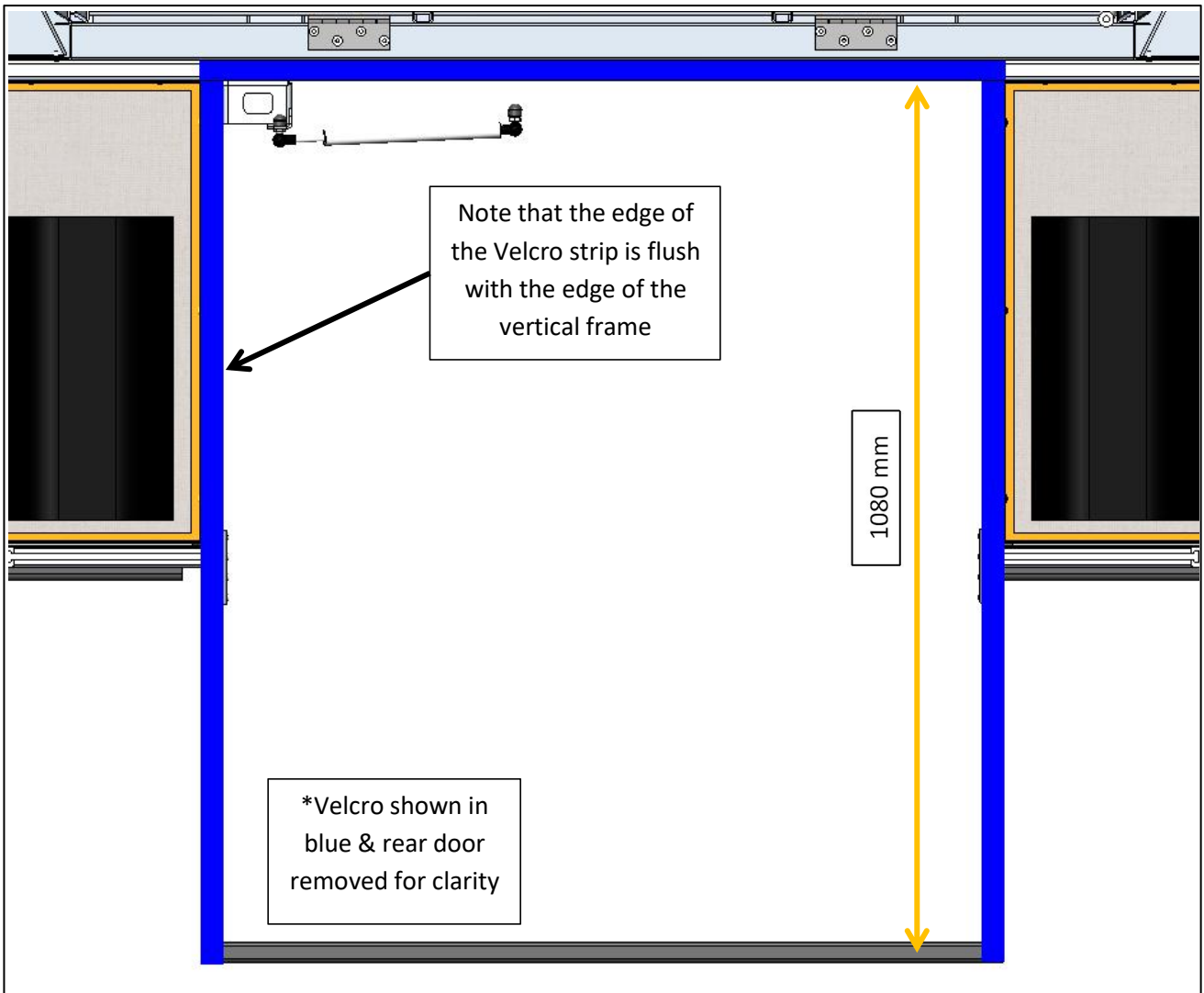


Figure 3: Velcro Application (Side Surfaces)

3.3 Bottom Surface - Velcro Application (100 mm Strips):

Apply the five (5) 100 mm long Velcro strips to the bottom surface of the rear door frame. Use a measuring tape and a pencil, to mark out the locations, as shown in Figure 4 below:

Peel back the white backing layer, and apply the Velcro, starting in the one corner, flush on both edges of the frame and work your way along the length slowly. After the Velcro is seated, use the 3M PA-1 Applicator to apply a smooth, constant pressure sweep from one end to the other. This even pressure activates the bonding adhesive, and pushes out air bubbles. See Figure 4, below:

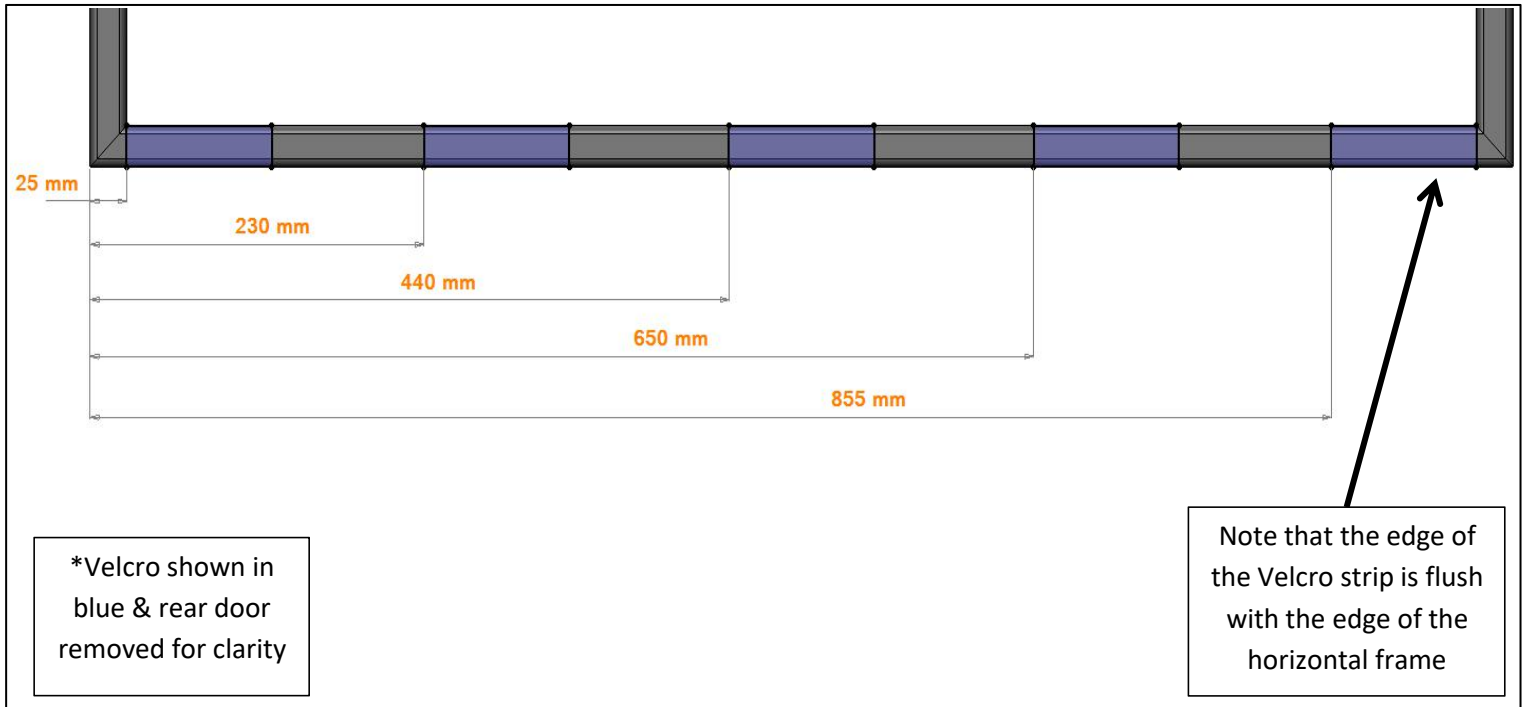


Figure 4: Velcro Application (Bottom Surface)

4. Mozzie / Midgie Net Fitment



Allow 24 hours cure time for the Self-Adhesive Velcro, before attaching the Rear Door Mozzie / Midgie Net.

Simply line up, and attach the Rear Door Mozzie / Midgie Net, starting at the top two (2) corners, and working your way down.

The top corners, when aligned, will look like Figure 5, below:



Figure 5: Fitted Rear Door Mozzie / Midgie Net